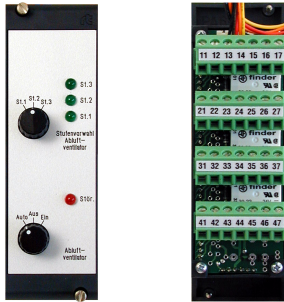


The RLK0030 serves as control module with manual override function for controlling one 3-speed motor.



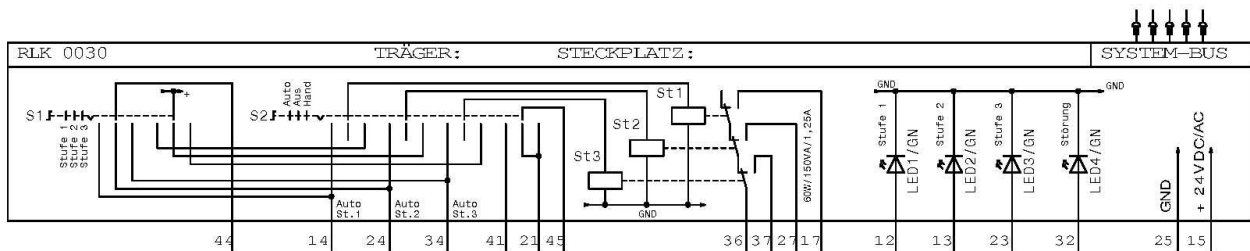
There is a rotary switch for the functions "Auto"- "Off"- "Man" and a second switch for each speed 1- 3. There is an separate layer for the "Auto", "Off" and "Man" positions, in order to indicate manual override to the DDC. To signal the status "Running", 3 green LEDs are installed (e.g. feedback from the power contactor 24V DC / AC).

There is also a red LED for an error message available that will cause a collective fault when wired with the central module RSM. The LEDs are driven with + 24V DC / AC. You can drive power contactors directly with potential free contacts (note contact load instructions).

In switch position "Auto" the relays are controlled by the DDC / PLC + 24V DC / AC.

If the DDC fails, you can control the system by means of switches.

You can test the lamps with the RSM module connected via the 5-pole bus cable.



Supply voltage: 24V DC / AC  $\pm$  10%  
Power consumption: max. 110 MAPRO relay 15 mA)  
(Per LED about 5 mA)

Inputs:  
Control with 24V DC / AC

Signalling: Fault LEDs, color red Run LEDs, color green

Relays outputs:  
Switching voltage, max.: 250 VAC / 30 VDC  
Switching current, max. (Resistive): 5 A  
Switching capacity: 625 VA / 150 W  
Rated load (resistive): 2.5 A / 250 VAC; 5 A / 30 VDC  
Life at rated load 50,000 operations  
without load 5,000,000 operations

Automatic or switch to local feedback: Switching capacity: 1 VA / 1 W  
Switching voltage max. 50V AC / DC  
Switching current: 20mA  
Quiescent current: max. 1A  
Lifespan min. 20,000 / 15,000 switching cycles

Environmental conditions:  
Operating temperature 0 ... 50 ° C  
Transport and storage temperature -20 ... + 70 ° C  
Relative humidity 5 ... 95%, non-condensing  
Protection class: IP 40, when using transparent coverage up to IP 54

Dimensions:  
Width 8TE(40.5mm), height 3HE(129mm), for mounting into 19" racks

Installation depth <80 mm  
Terminals: 2.5mm<sup>2</sup> pluggable terminal

CE Conformity  
EN 61000-4-2 / IEC 801-2 Electrostatic Discharge ESD  
Contact discharge 8 kV / air discharge 8 kV  
EN 61000-4-5 / IEC 801-5 Surge  
AC supply voltage 4 kV, 0.5 kV DC  
Signal lines 2 kV  
EN 61000-4-4 / IEC 801-4 Burst  
Inputs - Outputs +/- 2 kV  
Supply voltage AC / DC +/- 2 kV